

2010 IC/CE 300 – 60+1 PASSENGER

CHASSIS

2010 IC/CE
EMMISSIONS COMPLIANT
276" WHEELBASE
50,000 PSI FRAME
MAXXDT INLINE 6 CYLINDER ELECTRONIC CONTROLLED
TURBO CHARGED / AFTER COOLED **DIESEL** ENGINE
220 HORSEPOWER / 620 FT/LB TORQUE
EXPANDED ENGINE TEMPERATURE EFFECTS
ENGINE SOUND ABATEMENT PACKAGE
ALLISON A2500PTS TRANSMISSION
POWER STEERING
CRUISE CONTROL
TILT STEERING COLUMN
ANTILOCK HYD. BRAKES W/TRACTION CONTROL
DISC BRAKES FRONT AND REAR
12 X 3 BOSCH PARKING BRAKE W/INTERLOCK
AUTOMATIC PARKING BRAKE CONTROL
FRONT WHEEL SEALS
10,000 # FRONT AXLE
10,000 # FRONT PARABOLIC TAPER LEAF SPRINGS
19,800 # REAR AXLE – 4.88 RATIO
19,800 # REAR SUSPENSION VARIABLE RATE
FRONT & REAR SHOCK ABSORBERS
11R22.5G HANKOOK AH12 FRONT TIRES
11R22.5G HANKOOK Z35A REAR TIRES
22.5 x 8.25 " HUB PILOTED DISC WHEELS
190 AMP LEECE NEVILLE ALTERNATOR
TRIPLE 12 VOLT BATTERIES – 1,950 CCA TOTAL
DELCO REMY STARTER
MANUAL RESET CIRCUIT BREAKERS
65 GALLON FUEL TANK WITH CAGE
TWIN ELEMENT FUEL FILTER
HEATED FUEL / WATER SEPERATOR
SINGLE EXHAUST
HEAT SHIELD FOR EXHAUST
BORG-WARNER VISCOUS FAN CLUTCH
1,250 WATT ENGINE BLOCK HEATER
ENGINE OIL COOLER - INTEGRAL
HEAVY DUTY DRY AIR CLEANER
RESTRICTION INDICATOR - AIR CLEANER
ELECTRONIC FAST IDLE
HEAVY DUTY FRONT BUMPER
FRONT & REAR TOW HOOKS
TILT HOOD AND FENDERS, EASY TILT
AERO HALOGEN HEAD LAMPS
DAYTIME RUNNING LIGHTS
DUAL ELECTRIC HORNS
LOW COOLANT ALARM
TRANSMISSION TEMPERATURE GAUGE
ENG. ALARM - LOW OIL PRESS / HIGH WATER TEMP.
BRAKE WARNING LAMP AND BUZZER
SPEEDOMETER AND ODOMETER
TACHOMETER AND VOLTMETER
HOURMETER / AMMETER
OIL PRESS / WATER TEMP / FUEL LEVEL GAUGES

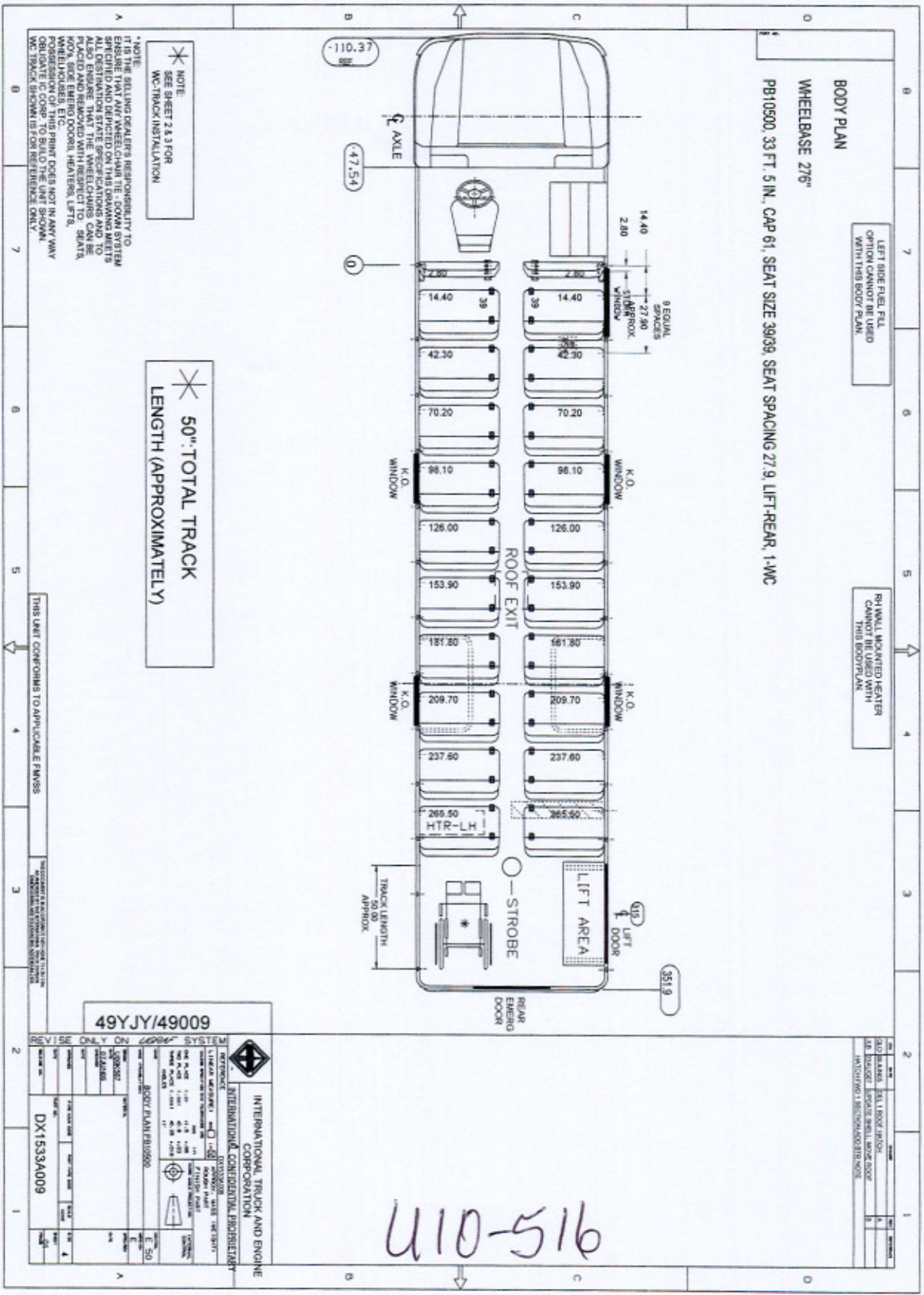
BODY

2010 IC/CE 7200 CONVENTIONAL – 33'5"
FMVSS BODY CONSTRUCTION
78" HEADROOM W / 12" WINDOW OPENINGS
STAINLESS STEEL ENTRANCE AREA GRAB RAILS
LOCKING FUEL DOOR
LOCKING BATTERY COMPARTMENT
ELECTRICAL ACCESS PANEL
ACCESS COVER-FUEL SENDER
ELECTRIC OPEN OUT ENT. DOOR W/VANDAL LOCK
OUTSIDE ASSIST HANDLE – ENTRANCE DOOR
DUAL DOOR CONTROL MOUNTED ON STEERING WHEEL
& LH SWITCH PANEL
REAR EMERGENCY DOOR W/VANDAL LOCK
& INTERLOCK
RETAINER FOR EMERGENCY DOOR
43" RH REAR LIFT DOOR W/VANDAL LOCK
& INTERLOCK
INSULATION-ROOF & SIDES 1 1/2"
ACOUSTIC HEADLINER – FULL LENGTH
W/SOUND INSULATION – FULL LENGTH
INSULATION NOISE REDUCTION – ROOF BOWS
UNDERCOATED STEPWELL SIDE – NOISE REDUCTION
BODY UNDERCOAT – FIRE RESISTANT TTC
HEADLINER FASTENED W/SCREWS

BODY

14 GAUGE ROOF BOWS
16 GAUGE SKIRT PANELS
16 GAUGE SMOOTH SIDE PANELS
4 EXTERIOR RUB RAILS
3-PIECE FLAT / TINTED WINDSHIELD – 73%
STATIC ROOF VENT
(1) SPECIALTY ROOF HATCH / VENT
(4) EMERGENCY PUSH OUT WINDOWS
WINDOW STOP LINES
STORM GLASS – 1ST RH
STORM GLASS – DRIVER'S WINDOW
STORM GLASS – ENTRANCE DOOR
LOWER GLASS – REAR EMERGENCY DOOR
2 AUXILIARY DEFROSTER FANS
MANUAL RESET CIRCUIT BREAKERS
HEATER CUT OFF VALVE
HEATER BOOSTER PUMP
CONSTANT TORQUE CLAMPS – HEATER HOSES
DRIVER'S HEATER / DEFROSTER W/FILTER - 90,000 BTU
STEP WELL HEATER / DEFROSTER 50,000 BTU
FULL WIDTH DEFROSTER
REAR HEATER - 2 FANS W/FILTER - 84,500 BTU
ARMORED CLEARANCE / CLUSTER LAMPS
7" AMBER DIRECTIONAL FRONT AND REAR
ARMORED SIDE DIRECTIONAL
7" REAR STOP/TAIL
4" BACK UP LAMPS
BACKUP ALARM 107db
PLASTIC LIGHT BARS
DUAL ROW DOME LAMPS / DUAL SWITCHES
DRIVERS DOME LAMP - SEPARATE SWITCH
DOME LIGHT TIMER W / 2 MINUTE DELAY
ICC RED LAMP OVER REAR EMERGENCY DOOR
LIFT AREA DOME LAMP
16 LAMP LIGHT MONITOR
8 LAMP WARNING SYSTEM W/HOODS
LOW PROFILE STROBE LAMP W/PILOT LIGHT
12 VOLT POWER SOCKET
BATTERY CUT OFF IN BATTERY COMPARTMENT
POST TRIP INSPECTION MONITOR W / ALARM
EXTERIOR LIGHT CHECK
MAGNETIC BODY CUT-OFF SOLENOID
NOISE SUPPRESSION SWITCH
AM / FM / CD / PA RADIO W / WEATHER BAND & 4 SPEAKERS
OUTSIDE SPEAKER UNDER STEPWELL
DOOR SWITCH - STEP WELL LAMP
REAR DOOR BUZZER & PILOT LAMP
LIFT DOOR BUZZER & PILOT LAMP
ENTRANCE / EMERGENCY / LIFT DOOR HEADER PADS
LETTERING TO ILLINOIS / FEDERAL REQ.
POLYURETHANE EXTERIOR PAINT
PAINTED BLACK AROUND 8 WAY LAMPS
3M DIAMOND GRADE REFLECTIVE TAPE –SIDES & EXITS
3M DIAMOND GRADE REFLECTIVE SCHOOL BUS SIGNS – FRONT & REAR
DOT SB HB **SEAT BELT READY SEATS**
DOT SB HB BARRIERS
GRAY VINYL UPHOLSTERY
PADDED SHOULDER RAILS
NATIONAL 2000 DRIVERS SEAT W/FABRIC INSERT
DRIVERS 3 PT. SEAT BELT / WITH LOCKING RET.& ADJ. "D" LOOP
FRONT & REAR RUBBER MUD FLAPS
5/8" EXTERIOR GRADE PLYWOOD SUB FLOOR
DARK GRAY KOROSEAL FLOOR AND STEPS
2" STANDEE MARKER
ALUMINUM AISLE TRIM
ABS MOLDED WHEELHOUSE
(1) 9 3/8" X 6" CERTIFICATE HOLDER
6 X 30 INSIDE MIRROR – PADDED
6 X 30 PLEXIGLASS SUN VISOR
ROSCO FLAT 9 X 17 CONVEX R/VIEW
ROSCO MINI HAWKEYE CROSS VIEW MIRRORS
ALL EXTERIOR MIRRORS HEATED
REFLECTORS AS REQUIRED
ELEC. HEATED STOP ARM - OCTAGON W / STROBE LIGHTS
WET ARM WASHER SYSTEM-6 QT. CAP.W/SINGLE SWITCH
ILLINOIS CERTIFICATION LABEL
SAFETY EQUIPMENT
ELECTRIC POLY CROSSING ARM W/INTERRUPT SWITCH
BUS CAM BOX & WIRING
BRAUN NL 919FIB WHEELCHAIR LIFT
SURELOK "L" TRACK FLOOR TRACK
1 SURELOK WHEELCHAIR TIE DOWN

****FLOOR PLAN PICTURE ATTACHED**



BODY PLAN
 WHEELBASE 276"
 PB10500, 33 FT. 5 IN., CAP 61, SEAT SIZE 3939, SEAT SPACING 27.9, LIFT-REAR, 1-WC

LEFT SIDE FUEL FILL OPTION CANNOT BE USED WITH THIS BODY PLAN

REAR WALL MOUNTED HEATER CANNOT BE USED WITH THIS BODY PLAN

* NOTE:
 SEE SHEET 2 & 3 FOR WC TRACK INSTALLATION

* 50" TOTAL TRACK LENGTH (APPROXIMATELY)

* NOTE:
 IT IS THE SELLING DEALER'S RESPONSIBILITY TO ENSURE THAT ANY WHEELCHAIR TIE-DOWN SYSTEM SPECIFIED AND DERIVED ON THIS DRAWING MEETS THE REQUIREMENTS OF THE APPROPRIATE REGULATIONS. ALSO ENSURE THAT THE WHEELCHAIRS CAN BE PLACED AND REMOVED WITH RESPECT TO SEATS, ROW, SIZE EMERGENCY DOORS, HEATERS, LIFTS, AND OTHER EQUIPMENT. THE POSITION OF THIS PRINT DOES NOT IN ANY WAY OR BLATE IC CORP TO BUILD THE UNIT SHOWN. WC TRACK SHOWN IS FOR REFERENCE ONLY.

THIS UNIT CONFORMS TO APPLICABLE FMSS

THIS UNIT CONFORMS TO APPLICABLE FMSS

REVISE ONLY ON COOP SYSTEM	
49YJY/49009 BODY PLAN PB10500	INTERNATIONAL TRUCK AND ENGINE CORPORATION CONFIDENTIAL PROPRIETARY
DX1533A009	410-516